

# AHC1

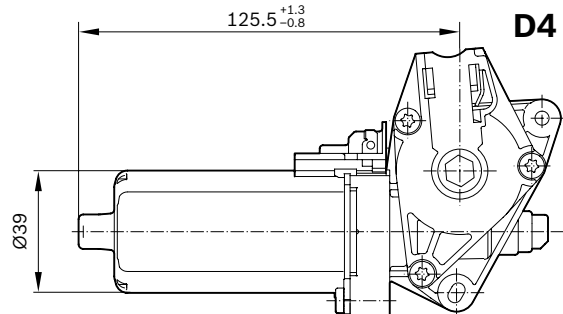
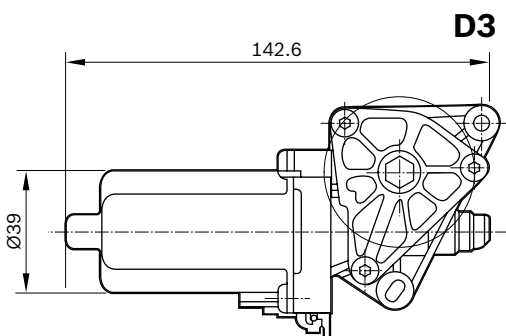
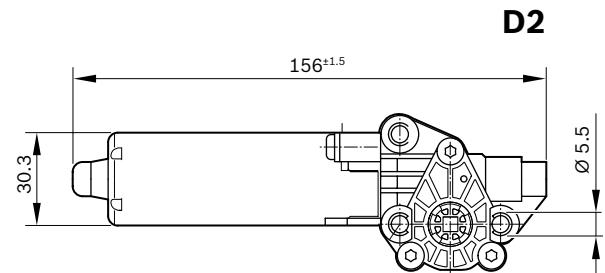
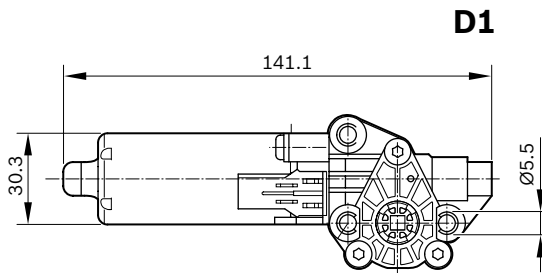


## Family features:

- ▶ With and without hall sensor
- ▶ Degree of protection: IP 50
- ▶ Operation mode: S2
- ▶ Hollow shaft

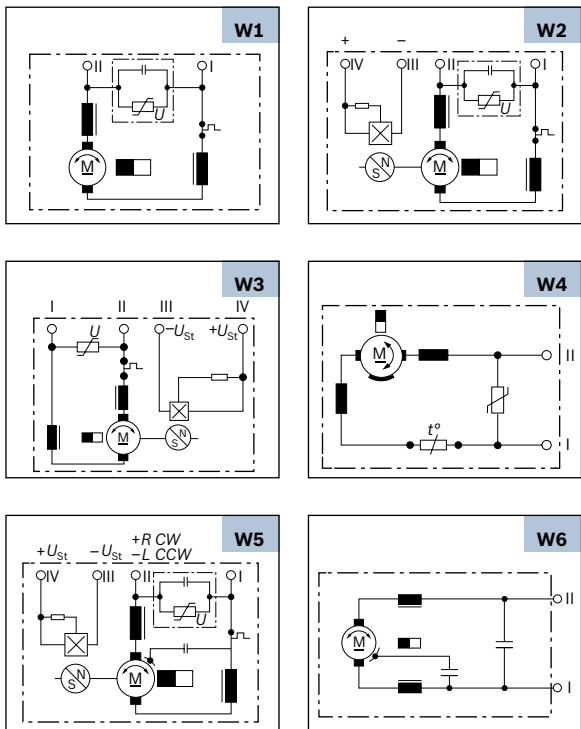
Voltage	Part number	P <sub>n</sub> (Nominal power)	I <sub>n</sub> (Nominal current)	n <sub>n</sub> (Nominal speed)	M <sub>n</sub> (Nominal torque)	M <sub>a</sub> (Stall torque)	Gear ratio	Signal	Side**	Dimensional drawing (D)	Wiring diagram (W)	Drive end (S)	Connector (C)	Performance curve (P)
		W	A	rpm	Nm	Nm		Hall						
12 V	0 390 201 900	8,8	5	845	0.1	1.05	27:4	No	R	D1	W1	S1	C1	P1
	0 390 201 912	8,8	5	845	0.1	1.05	27:4	No	L	D1	W1	S1	C1	P1
	0 390 201 902	8,8	5	845	0.1	1.05	27:4	Yes	R	D1	W2	S1	C2	P1
	0 390 201 914	8,8	5	845	0.1	1.05	27:4	Yes	L	D1	W2	S1	C2	P1
	0 390 203 371	12.9	4	411	0.3	1.5	27:4	Yes	L	D2	W2	S2	C2	P6
	0 390 201 901	8.6	5	820	0.1	1.5	27:4	No	R	D2	W1	S1	C1	P2
	0 390 201 903	8.6	5	820	0.1	1.5	27:4	Yes	R	D2	W2	S1	C2	P2
	0 390 201 913	8.6	5	820	0.1	1.5	27:4	No	L	D2	W1	S1	C1	P2
	0 390 201 915	8.6	5	820	0.1	1.5	27:4	Yes	L	D2	W2	S1	C2	P2
	0 390 203 370	6.6	3.8	210	0.3	2.8	31:2	Yes	L	D2	W5	S2	C2	P7
0 390 203 431	13.2	7	63	2	5.8	50:1	Yes	L	D3	W3	S3	C2	P3	
24 V	0 390 203 314	8.8	3.2	841	0.1	1.85	27:4	No	R	D2	W4	S2	C1	P4
	0 390 203 315	8.8	3.2	841	0.1	1.85	27:4	No	L	D2	W4	S2	C1	P4
	0 390 203 316	8.8	3.2	841	0.1	1.85	27:4	Yes	R	D2	W3	S2	C2	P4
	0 390 203 317	8.8	3.2	841	0.1	1.85	27:4	Yes	L	D2	W3	S2	C2	P4
	0 390 203 386	15.6	4.8	99.5	1.5	11	50:1	2x Hall*	L	D4	W6	S3	C1	P5

\* Optional (0 986 196 002) / \*\*gear housing left: L, gear housing right: R

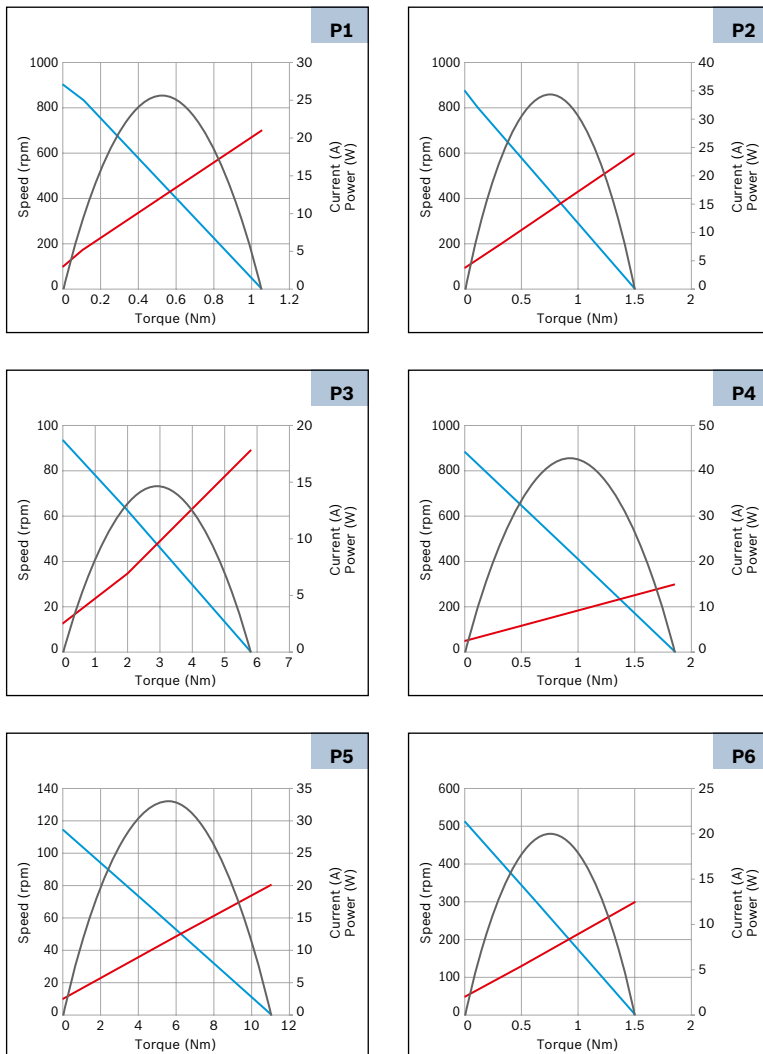


# AHC1

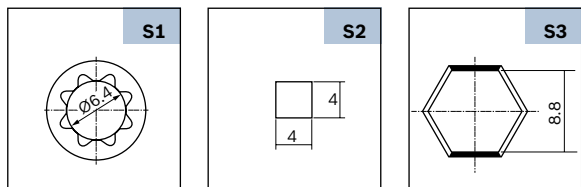
## Wiring diagram (W)



## Performance curve (P)



## Drive end (S)



## Mating connector (C)

