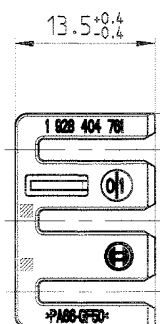
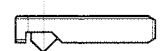
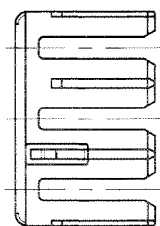
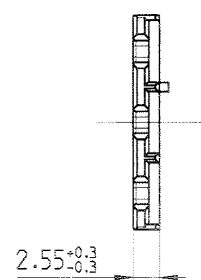


© THIS DRAWING IS THE EXCLUSIVE PROPERTY OF ROBERT BOSCH GMBH. WITHOUT THE WRITING IT MAY NOT BE REPRODUCED OR GIVEN TO THIRD PARTIES.

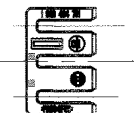
© Alle Rechte bei Robert Bosch GmbH, auch fuer den Fall von Schutzrechtsverletzungen, vorbehalten. Weitergabe, wie Kopie- und Weitergaberecht, ist untersagt.

Welt- freisdr. Angebotszeichnungen
FURTHER FOREIGN LANGUAGE OFFER DWGS



20.7^{+0.3}_{-0.3}
1 mm Einfall zulaessig
1 MM INCIDENCE PERMITTED

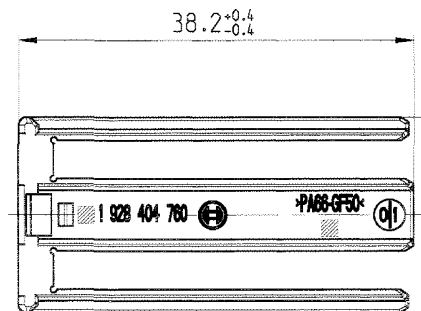
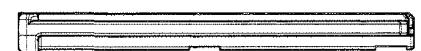
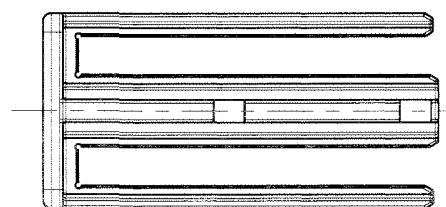
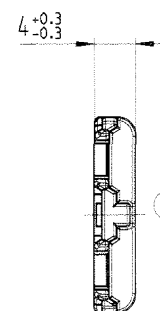
1:1



1:1



Benennung DESIGNATION	Bestell-Nr. ORDER NUMBER	Material MATERIAL	Farbe COLOR
Sekundaerverriegelung 2.8mm SECONDARY LOCK 2.8mm	1 928 404 761	PA66- GF50	Lila LILAC

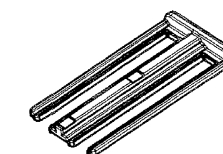


18.9^{+0.3}_{-0.3}
2 mm Einfall zulaessig
2 MM INCIDENCE PERMITTED

1:1



1:1



Benennung DESIGNATION	Bestell-Nr. ORDER NUMBER	Material MATERIAL	Farbe COLOR
Sekundaerverriegelung 1.2mm SECONDARY LOCK 1.2mm	1 928 404 760	PA66- GF50	Lila LILAC

Teile koennen in nicht funktionsrelevanten Details von der Darstellung in dieser Zeichnung abweichen
PARTS CAN BE DIFFERENT IN NON-FUNCTIONAL RELEVANT DETAILS FROM THIS DRAWING

AZ: 1 928 A00 133		SZ: .	CAD-Original	05.05.04	CAD-Lieferer	Nr.:43 391	CAD-Part: 1928404760-762_gen.prt/761.prt
Dokumentenart / DOCUMENT TYPE		Nicht tol. Masse NON TOLERANCED DIMENSIONS ± 1 mm. ± 2		ISO E		Massstab SCALE 2:1 (1:1)	
Angebots- zeichnung		OFFER DRAWING		Benennung/ TITLE		Gewicht WEIGHT	
4 ueberarbeitet/CORRECTED		Co	05.05.04	Sm	Datum/DATE		04.12.01
3 ueberarbeitet/CORRECTED		Co	10.07.03	Sm	Name/NAME		Co
2 ueberarbeitet/CORRECTED		Co	17.03.03	Sm	ges/CHK		Co/Kh
1 Neuausgabe		Co	07.01.02	Ag	ges/APP		Ag
DIN A2		Original: GS-CP/ENG2		Benennung/ TITLE		Sekundaerverriegelungen 58-p. SECONDARY LOCK 58-WAY	
Nr. / NO.		1 928 A00 135		de/en		Blatt SHEET 1	
Ers.f. / REPLACES		Ers.d. / REPLAC.BY		Ausfuellanleitung N12A D11/1 beachten!		Blatt SHEET 1	

OBSEVE INSTRUCTIONS FOR FILLING OUT M2A 01/17